



Annual Report
2010





The mission of
Chicago Children's
Museum is to
create a community
where play
and learning
connect.

Dear Friends,

Meaningful play. It's how children begin their journey into learning. It's also the basis for everything we do at Chicago Children's Museum. Every exhibit, program, and experience begins with the philosophy that hands-on, open-ended play is essential for the well-being of children.

Our goal is to be a model for children's museums—a thought leader committed to best practices and excellence. In 2005, when we developed the *Standards of Excellence in Early Learning*, we defined our aspirations. This year, we continued to turn those ideas into reality.

In fiscal year 2010, Chicago Children's Museum made significant progress on a museum-wide initiative to identify and examine important issues facing children's museums. This "position paper project" led to the development of institutional policies based on our child-centered philosophies and best practices in the field. The Board of Directors ultimately adopted eight position papers on topics such as play, accessibility, and diversity.

We continued to demonstrate our commitment to supporting formal education with a tremendous growth in our Student and Educator Programs. Last year, we served more than 41,000 teachers and students. Our exhibits, workshops, and curriculum served as valuable resources for incorporating playful strategies in the classroom.

We helped further the local and national conversation about the importance of play through *The State of Play in Chicago's Communities*, a study we undertook to examine issues that hinder or support play and proposed strategies for overcoming barriers and bringing play back to homes, schools, and communities.

Looking ahead, museum staff began to define what a children's museum could be in *Imagine Childhood*, our conceptual framework for the future. This framework has laid the foundation for exhibits, programming, educational initiatives, and staff interactions that will extend our community where play and learning connect.

We thank you for choosing to be part of our mission and vision. By supporting Chicago Children's Museum and the value of play, you are enriching the lives of children and families in a way that truly matters.

Sincerely,



Gigi Pritzker Pucker
Chair, Board of Directors



Robert F. Barnett
Chair Elect, Board of Directors



Jennifer Farrington
President and Chief Executive Officer



657,136
Total served

58,146
Member visits

1,184
Low-income families
benefited from \$10
museum memberships

It All Starts with Play

The conviction that play is essential for children's emotional, physical, and academic success inspires Chicago Children's Museum to provide families, students, and educators with the best possible atmosphere and rich, diverse opportunities for learning. This year, the museum remained true to its mission by advocating the importance of play, refining and implementing best practices, and enhancing the overall visitor experience.

Advocating For Play

Through the *Chicago Communities at Play Initiative*, generously funded by the Marguerite Casey Foundation, the museum provided leadership and support for the growing effort to make play a fundamental experience for all children in all communities.

Museum staff spent eight months researching play in Chicago and conducting community-based workshops with caregivers, educators, parents, and family advocates from diverse backgrounds. The resulting report, *The State of Play in Chicago's Communities*, illustrated many barriers to children's play, ranging from unsafe outdoor play areas to a lack of awareness among adults regarding the benefits of play. The report also offered an action plan for change, including engaging and educating adults, building a network of supporters, and working with communities to enhance play environments both within and beyond the museum's walls.

Refining Best Practices

Building on the *Standards of Excellence in Early Learning* model, Chicago Children's Museum undertook an institution-wide initiative to define its positions and explore solutions on topics relevant to children's museums.

The success of the "position paper project" can be attributed to the creativity and commitment of Chicago Children's Museum staff participants. For each of the eight position papers adopted by the Board of Directors—Play, Learning, Access and Inclusion, the Arts, Science, Diversity, Role of the Adult, and Corporate Engagement—museum staff and management, working in teams, accessed research and gathered input from external experts, consultants, and the museum's Board of Advisors. They considered their own first-hand experiences and observations as museum and education professionals.

By creating institutional policies based on CCM's child-centered philosophies—our mission, vision, the *Standards of Excellence in Early Learning*—and best practices in the field, CCM set measurable guidelines for shaping current and future museum experiences. As a leader in the field of family-centered learning, CCM began to make these papers available to other institutions via conferences and presentations.

Enriching Visitor Experiences

Enhancing learning connections within the museum's walls is another area Chicago Children's Museum focused on this year. When developing exhibits and programs, CCM considers the entire visitor experience, not just the physical exhibit. What will maximize the learning potential for visitors? The following formula defines the museum's approach:

Exhibit + Program + Staff Interaction = Chicago Children's Museum Experience

The museum's knowledgeable, dedicated staff play an invaluable role in personalizing the visitor experience. Facilitators trained in educational theory and best practices, combined with innovative programming and interactive exhibits, deeply engage children and serve as models for family interaction.



960

Visiting artists

// Chicago Children's Museum is the one place where we can focus on just playing together as a family for hours.

Museum visitor //

53,787

Early childhood program participants



Discovery Starts with Play

The popular *Forts* exhibit exemplifies how CCM's sophisticated formula of programming, staff interaction, and exhibit personalizes the experience and strengthens the play-learning connection. Created from the child's point-of-view, *Forts* offered visitors the ultimate childhood play experience. Who doesn't love building forts? Household items, such as leaning doors and headboards, cabinets without backs, upside-down coffee tables, and plenty of blankets and sheets, provided children with the perfect backdrop for creating their own special places. The completed forts offered limitless opportunities for socializing and dramatic, open-ended play. To personalize the experience, a museum facilitator, in the guise of "Magic Peddler," came through the exhibit with a variety of props and materials children could "purchase" for their fort. The facilitator then assumed the role of scribe, offering children opportunities to dictate a story related to their fort and pretend play. Parents and caregivers were also encouraged to serve as scribes.

Chicago Children's Museum also revitalized *The Allstate Foundation Presents Play It Safe* exhibit to address the serious issue of fire safety in a playful, educational environment. Developed in partnership with the Chicago Fire Department, the new exhibit features an authentic-looking firehouse, complete with a fire pole, fire gear, and siren. Whether escaping a "smoke-filled" room in the "Get Low and Go" experience or aiming the hose at the "flaming" bungalow windows, children learn and practice fire safety through imaginative play.

A seasonal favorite, *Block Party*, brought families and children of all ages, backgrounds, and abilities together for a cool summer party. Whether performing with a guitar for their families on stage, serving up ice-cream cones, or preparing pretend pizzas in a realistic "wood-burning" oven, children used imagination and active participation to build their own understanding of summer, gaining socialization and other valuable developmental skills in a natural, age-appropriate way.

The museum's *Skyline* exhibit received a Special Achievement in Cooperative Learning award by the American Association of Museums. *Skyline* encourages collaborative learning, as families or students work together to design skyscrapers and discover the science, engineering, art, and technology behind Chicago's tallest buildings.

Involvement Starts with Play

Family participation plays a powerful role in the learning experience. When children play with the important family members in their lives, they develop such skills as sharing, negotiating, and problem solving.

Involving families in children's learning continues to be a priority for the museum. Through a joint grant from the Institute for Museum and Library Science (IMLS), Chicago Children's Museum is working with Boston Children's Museum to develop a curriculum for museum staff to build skills that support family involvement in play-based learning.

CCM's daily drop-in programs encourage parents and caregivers to participate in the museum experience. Activities in science, literacy, and health explore single subjects with multiple entry points. Museum staff incorporate memorable, dramatic events to spark dialogue between children and their caregivers.

As part of CCM's commitment to providing exhibits, programs, and public spaces that are inclusive and interactive for all visitors, monthly *Play For All* events for children and families with disabilities continued during the past year, and attendance grew significantly. These free events inspired children and their families to test their limits and try new experiences in a safe and welcoming environment.



41,059
Students and
educators served

// This blows any other professional development out of the water in my 9 years of teaching. Outstanding! **//**

Early Education For All
participating teacher

1,368
Participated
in *CCM To Go*
workshops

Learning Starts with Play

Chicago Children's Museum offers so much more than a fun place to play. Every exhibit, workshop, and program brings educational value to children and families. From daily programming for the museum's youngest visitors to workshops designed for parents and educators, CCM's playful learning strategies shape each museum experience to maximize learning potential.

The goal of strengthening the museum-classroom connection led to an expansion in Student and Educator programs and partnerships, with thousands of students and visitors participating in the museum's interactive workshops and self-guided tours. *CCM To Go* brought play-based learning experiences directly to classrooms, daycare centers, homeless shelters and more through creative, interactive workshops. With the museum's programming aligned with the Illinois State Learning Standards, educators had the opportunity to connect the museum and its resources to their classrooms' curricular goals.

The museum continued to cultivate meaningful partnerships with Chicago Public Schools and other city institutions, resulting in an innovative array of playful programs for students, families, and educators, both within and beyond the museum's walls.

Addressing the need for improved science comprehension at the elementary-school level, CCM, in partnership with the Field Museum, Lincoln Park Zoo, Peggy Notebaert Nature Museum, and Northwestern University, developed the *Early Elementary Science Partnership (E²SP)*. The program, through professional development workshops, in-classroom support, and field trips, provided more than 50 elementary school teachers with content and strategies to spark an excitement for science in their classrooms.

Early Education For All introduced engaging sensory activities to pre-kindergarten classrooms for students of diverse abilities. Working with CPS' Office of Specialized Services, the museum implemented a comprehensive professional-development program that impacted more than 40 teachers and 800 students and their families.

Educators and caregivers had plenty of opportunities for professional development through specialized programs designed to meet specific needs within schools. Chicago Public School teachers participated in *CLIMB (Collaborative Learning in Museums and Beyond)*, a summer institute and yearlong program active since 2005 that is designed to develop teachers' abilities to enhance curriculum goals using informal learning strategies and the museum's resources.

// It gives students the chance to show one another what they know and feel really good about that knowledge. //

2nd grade teacher, on the value of her field trip



37,601

Kraft Free Family
Night attendees

10,710

Children received free admission
on Target Free First Sundays

10,532

Community partners
received free
transportation to
the museum



Connection Starts with Play

One of our core beliefs at Chicago Children's Museum is that play is the right of every child, regardless of ability, background, or income. All children and families need—and deserve—a safe, supportive, and fun environment for meaningful play and informal learning opportunities.

Last year, Chicago Children's Museum connected with low-income and geographically-isolated children and families through more than 400 community partnerships. Thousands of families came to play on *Kraft Free Family Night* and *Target Free First Sundays*. Heavily discounted community family memberships, free transportation, and subsidized school group admission made the museum and its resources accessible to families living in underserved neighborhoods throughout the city.

Passport to the World provided children and families the opportunity to learn about the rich diversity that defines Chicago. The sights, sounds, tastes, and traditions of eleven of Chicago's vibrant cultures—including Greece, Ireland, China, India—came to life through playful events, hands-on activities, and special performances and workshops.

CCM promoted positive messages about healthy lifestyles in playful and empowering ways for more than 1,500 visitors on *Health and Wellness Night*. More than 32 partners provided information, activities, and free screenings to low-income families to help both children and the important adults in their lives learn about health while having fun.

This past summer, CCM provided workshops for children served through the SPROUT! program, a special initiative organized through Illinois Action for Children designed to keep children safe, healthy and fit. CCM's program, called *Made to Move*, provided 300 workshops at 25 different community sites and focused on connecting physical play with key curricular milestones for children ages 5-10.

// Chicago Children's Museum has opened new windows of opportunity to our young students and their families through field experiences and learning activities. The museum has been a wonderful education partner over the years and provides a much needed resource to our community. //

Merle Dubnow,
Plamondon School,
Chicago Public Schools



91%

Of guests say
they will visit
Chicago Children's
Museum again!

Our Vision Starts with Play

As an institution committed to best practices, the museum continues to evolve and explore pioneering ideas about how to offer the best possible learning experiences to young children and their families. Last year, CCM reached a major milestone in preparation for the future by developing a detailed conceptual framework, *Imagine Childhood*.

To create a framework that would have longevity and room to evolve, the museum turned its focus to play and the universal pursuits of childhood that cross cultures and time. Museum staff compiled hundreds of “play memories” from teens and adults of various backgrounds and analyzed the common threads. A “think tank” of CCM staff and external experts in early childhood development, play, and universal design examined current educational theory and looked to the actions of children at play across cultures and throughout time. The museum’s goals outlined in the position papers, *Standards of Excellence in Early Learning*, and CCM’s design guidelines serve as measures for every exhibit and program developed within this framework.

The museum’s commitment to excellence has built a solid foundation that not only will shape the museum of tomorrow, but also impacts the experiences of visitors today. Innovation is happening every day with engaging exhibits, educational support, family and community involvement, and rich, diverse programming. Chicago Children’s Museum is not just a museum. It’s a community where families, educators, caregivers, and staff come together to discover, explore, collaborate, celebrate, inspire, and learn through play.

The museum’s commitment to excellence has built a solid foundation that not only will shape the museum of tomorrow, but also impacts the experiences of visitors today.



Financial Summary

Year ended June 30, 2010

Revenue and Support

Contributions:*

Foundations	\$ 358,958
Corporations	2,423,181
Individuals	520,532
Government Grants	38,731
Contributed Goods and Services**	2,666,296
Benefit Events	930,838
Contracts	158,403
Family Memberships	282,720
Admissions	1,270,578
Workshop Fees	518,922
Museum Store Revenue	247,659
Investment Income	21,164
Other	597,837

Total Revenue and Support \$10,035,819

Expenses

Program Services**	\$ 7,890,358
Supporting Services:	
Management and General	1,123,003
Fundraising***	1,114,286
Fundraising–Benefit (In-Kind)	238,831
Write Off of Uncollectable Pledges	593,848
Total Expenses	\$10,960,326

Revenue and Support Under Expenses	(924,507)
Loss on Disposal of Fixed Assets	(79,606)
Net Realized and Unrealized Gains (Losses)	(1,740)
Change in Net Assets	(1,005,853)
Net Assets at Beginning of Year	43,146,772
Net Assets at End of Year	\$ 42,140,919

*Includes contributions designated to fund capital project

**Includes \$2,032,500 lease donation from MPEA

***Includes expenses related to the capital campaign and a portion of general operating expenses

Possibilities Start with You

Chicago Children's Museum relies on the generous support of individuals, foundations, corporations, and government agencies to get families started on their journey of playful learning. Many thanks to all our supporters!

FY10 Annual Fund and Program Gifts

(represents gifts made between July 1, 2009 and June 30, 2010)

Individuals

\$1,000,000 + above

Anonymous
Crown Family Philanthropies
Susan and Kevin Flynn
Karen G. Harrison and
Walter G. Freedman
Ann Lurie
Barbara Goodman Manilow
Pritzker and Pucker Family
Foundations

\$500,000 - \$999,999

D & R Fund, Glasser and
Rosenthal Family

\$100,000 - \$499,999

Robert F. Barnett, III
Francis Beidler Foundation and
Prue and Frank Beidler
The Joseph L. and Emily K. Gidwitz
Memorial Foundation
Dana Hirt
Barbara and Rex Sessions
Zell Family Foundation

\$50,000 - \$99,999

Lisa and Bruce Cohen
Karen Curtin and Thomas Bond
Carol and Peter England
Hackberry Endowment Partners-
The Malkin Families
Carey and Adam Heckman
Paula R. Kahn

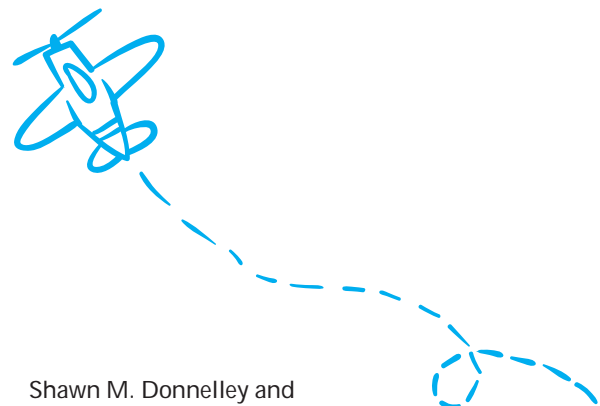
Judy and Herbert Krueger
Annmarie and Matthew† Neumeier
Charlene Huang Olson and
Christopher Olson
Dena and Jeffery S. Perry
Susan Smith and Thomas D.
Kuczmariski
Walker Rudnick Global
Community Fund

\$20,000 - \$49,999

Ellen Sachs Alter and Michael Alter
Jodi Block and Barry A. Malkin
Blakely and Harvey Bundy
Christina and Ronald Gidwitz
Lindy Hirschsohn and Chris Coetzee
Jacquie and Todd Lippman
Cheryl Watson-Lowry and
William A. Lowry
Roxanne and Rocco Martino
Nancy and Lester McKeever
Laura Myntti and Leif Selkregg
Georgy Ann and William Peluchowski
Teresa Poggenpohl and Stephen Steiner
Camille and Kevin Rudge
Laura and Andrew Schumacher
Paula A. Sneed and Lawrence P. Bass
Pamela and Jonathan Talbot

\$10,000 - \$19,999

Anonymous
Carol and Brendan Deely
Candance Parks-Chow and Dan Chow



Shawn M. Donnelley and
Christopher M. Kelly

Marian K. Freedman
Pamela and Michael Gordon
Heisley Family Foundation/
Emily Heisley Stoeckel
Heidi and Craig Johnson
Julie Latsko

Darcy and Christian McGrath
and Family

Goldie Wolfe Miller and Jack Miller
Christine and Matt Musa
Margot and Tom Pritzker
Gail and Robert Rodman
Laurie and Scott Rose
Sacks Family Foundation
Nydia and Michael Searle
Paul, Colleen, Brian and Jaime
Ziegler Family Foundation

\$5,000 - \$9,999

Edward F. Anixter Family Foundation
Mr. and Mrs. Steven Anixter
Purnima and Ananth Bhogaraju
Carole L. Brown
Teresa and Ray Carso
Nuria Fernandez and Daniel Hall
Kim and Justin W. Friesen
Jacqueline Griesdorn and Kevin Matzke
Julia Harris and Sunil Garg
Joanna and Jeff King
Rachel Kohler and Mark Hoplamazian

Please call the Development Office at (312) 464-7708 if your name was omitted or if there is an error in the listing.

†deceased

Mary Liz and Peter Lehman
Doris Davenport Lowry and
James H. Lowry
Teri and William E. Lowry
Suzanne Muchin and David Brown
Kathy and Grant Pick Fund
J.B. and M.K. Pritzker Family
Foundation
D'Rita and Robbie Robinson
Chelsea and James J. Smith
Stephanie Thompson
Drs. Mary and Joseph Tyree
Judy Wise and Sheldon Baskin
Marianne and Thomas Zidar
Ronna and Steven Zoll

\$1,000 - \$4,999

Diana Aixelá and Gavin Campbell
Heidi and Craig Albert
Voula and Constantine Alexandrakis
Jennifer and Aaron Alt
Anonymous
Larry Bell
Robin Loewenberg Berger and
Louis† Berger
Natalie Bortoli and Charles Hafner
John Wm. Butler Jr. and
John M. Vanderlinden
Mary Beth and Phil Canfield
Mia Celano and Noel L. Dunn
Margarita Chavez and Mark Tatro
Angela and Thomas Chen
Titi and Adebowale Cole
Debbie and David Crowell
Leah Missbach Day and F.K. Day
Barbara and Charles Denison
Jill and Alexander Dimitrief
Sue and Wes Dixon
Debra Dobbs
Claudia and William Donnell
Carrie and Chip Dunn
Laura and Robert Dunne
Anne and Don Edwards
Bridget and Bill Epp
Jennifer Farrington and Sean O'Neill
Galia and Shay Felemovicius
Diana Ferguson
Jolie and Matt Fleming
Margaret and Frank Ginn
GKN Foundation
Mr. and Mrs. James J. Glasser
Nickol and Darrel Hackett
Joan Hall and George Cotsirilos

Harris Family Foundation
Cynthia Heusing and David
Kistenbroker
Susan and Bill Howe
Susie and Chris Hultquist
Susan and Steve Insoft
Lynn and Douglas Jackson
Lisa and Lamar Johnson
Carol Jones and Thomas Hynes
Yvette and David Killian
Laura Kofoid and David Ricci
Karen Kolodzey and George Brigandi
Sally and Jonathan Kovler
Anstiss and Ron Krueck
Kurzman Family Fund
Robert Lanphier
Benita Levy
Lisa and Raymond Lewis
Sheila and Eric London
Kathy and Kevin Lynch
Novack and Macey LLP/Eric N. Macey
Evelyn and Robert McCullen
Randy Mehrberg
Kim and Robert Mendonsa
Kathy Monahan and John Baglivo
Maydene and Christopher Moore
Linda Mueller and Brian Gupton
Mary and Jade Newburn
Carol and Theodore Novak
Oppenheimer Family Foundation
Jeanna Park
Molly and James Perry
Gwen and Erik Post
Jason Pritzker
Ellen Rakieten and Peter Kupferberg
Sachi and Tory Ramaker
Michelle Redd
Victoria and Bob Reich
Dana and Andre Rice
Cathy and Mark Robbins
Carol Rosofsky and Robert B. Lifton
Wende and Gary Rudnick
Bettylu and Paul Saltzman
Cynthia M. and Robert E. Sargent
Nina and Steve Schroeder
Beverly and Ira Schulman
Scott and Victoria Schutte
Jamie and David Schwartz
Janet Geovanis and Joshua Schwartz
Larry Serota
Robin and Steve Solomon
Marcy and Gerald Spector

Farah and Matt Speer
Adam L. Stanley
Heather Steans and Leo Smith
Robin Steans and Leonard Gail
Dr. Julene Stellato and Mr. John
Stellato
Dr. and Mrs. Scott Stiffle
Trott Family Foundation
Kelly and Dan Turula
Renee and James L. Tyree
Annette Pruss Vitek and Mike Vitek
Carolyn Wales
Elizabeth and Bruce White
Brenda Wolf and Fred Siegman
Sheila and Randall Yessenow

\$500 - \$999

Trisha Rooney Alden and Kris Alden
Lisa and Jeffrey Aronin
Meta S. Berger
Tammy and Richard A. Berkowitz
Selma and David Bouhl
David Bruskin
Tamara and Robert Buday
Stacy and Brian Carey
Gretchen Carlotti
Cindy and Steve Cruise
Sharon and Peter Exley
Barbara and Lawrence Field
Kate and Douglas Freedman
Meredith and Chad Freese
Kristine and Jonathan Garrett
Melissa and Mike Ginter
Mary and Richard Gray
The Handelsman Family Foundation
Carol Harris
Sydney and Robert Himes
Maria Bechily Hodes and Scott Hodes
Joan and David Hoese
Anne and Rich Horwath
Amy and Warren James
Rosalind and Michael Keiser
Lexie and John Knox
Nicole and Jim Korczak
Jeffry Kraus
Charlene Lieber
Elizabeth and David Liebovitz
Terri and Barry Lind
Jennifer and Joseph Lower
Karen K. and Jon E. MacKay
Dalia Maria and Luigi Mancusi
Michael Masters

Charles and Heather Montgomery
 Grove Mower
 Cynthia and Scott Mulcahy
 Adele and Mike Murphy
 Melissa and Mike Murray
 Ann and Walter Nathan
 Linda Palomar
 Heather Paquette and Paul Franczyk
 Dr. Vishruti Patel and Dr. Dilip Patel
 Ericka and Richard Phillips
 Ben Pritzker
 Lisa and Daniel Ragins
 Sheila and Andrew Rintels
 Martin P. Ryan
 Terri and Paul Schroeder
 Mr. and Mrs. Gordon Segal
 Janet and Larry Shiff
 Michael Shiff
 Stephanie and Jay Sinder
 Louise Belmont-Skinner, Steve Skinner
 and Zachary Skinner
 Donna Spagnola
 Mr. and Mrs. Harrison I. Steans
 Molly and Craig L. Stout
 Kathleen and Patrick Thompson
 Alyssa and Robert Unikel
 Heidi Wagman and Peter Bensinger
 Liz and Robb Webb
 Carolynne and Bruce Weisenthal
 Stacia Whitmore
 Deborah Wirtzburg and Jay Beidler
 Jason Wortendyke

\$250 - \$499

Harry Balaban
 Elizabeth Barnett
 Grace Barry
 Nancy Bason and William Colman
 Sheryl and Jim Beck
 Adam Becker
 Susan and Scott Becker
 Megan and Frank Beidler, IV
 Debbie and Elliott Berman
 Debbie and Henry Bieber
 Meg and Tim Callahan
 Peyton and Jon Callahan
 Kath Carter
 Mary and Bruce Casey
 Debbie and David Chazen
 Elizabeth and Lon Chow
 Joanne Cicchelli and William Singer
 Susan and Cynthia Ciolkosz
 Ginny Clarke

Angela and Darryl Cobb
 Elizabeth and Curt Coolidge
 Barb and Sam Country
 Sheeba Daniel-Crotty and Steve Crotty
 The Domenella Family
 Ernsteen Family Foundation
 Karen and Jason Friesen
 Sandra and Lee Golub
 Karen and Jay Goodgold
 Judy and Mel Hecktman
 Melinda Jakovich
 Anne and Burton Kaplan
 Yvette and Brian Karaba
 Frank Klepitsch
 Tara and Cary Kochman
 Natalie and Brad Kreiger
 Patricia and James Lancaster
 Katie and Jim Law
 Gail J. and Robert B. Loveman
 Debra Lubitz
 Emily McNeal
 Kathy and Louis Mendes
 Ana Miyares
 Karen and James Moran
 Lisa Morrell
 Christine and Jim Nappo
 Stephanie Neely
 Ian and Heather Osharow
 Tracy Petruso and William Deallaume
 Mr. and Mrs. Dale R. Pinkert
 Eva and Gary Quateman
 Randi Ragins and Robert Markowski
 Jenny and Keith Rofrano
 Hilary and Samuel Sallerson
 Marla and Eric Sedler
 Esther Shiff
 Alissa and Jonathan Shulkin
 Elizabeth and Todd Southwell
 Amy Spar and Howard Rosenburg
 Eileen and Rob Stein
 Irving Stenn Jr.
 Mr. and Mrs. James P. Stirling
 Margot Stern Strom
 Katherine Tisdahl and Patrick Hughes
 Spiro Tsaparas
 Kay and Craig Tuber
 Eric Wentz
 Maria Whelan and Jack Wuest
 Lili Ann and Ricky Zisook

Organizations

\$1,000,000 + above

Allstate
 Allstate Foundation
 BP Foundation

\$100,000 - \$499,999

Abbott Fund
 American Airlines
 Case Construction Equipment, a brand
 of CNH, a Fiat Group Company
 Howrey LLP
 Illinois Department of Commerce
 and Economic Opportunity
 Kraft Foods Foundation
 Microsoft Corporation
 Target Corporation

\$50,000 - \$99,999

The Joyce Foundation
 The John D. & Catherine T.
 MacArthur Foundation
 McCormick Foundation
 MetLife Foundation
 The PrivateBank and Trust Company

\$20,000 - \$49,999

Bank of America
 Chicago Defender
 Chicago Parent
 Chicago Sun-Times Charity Trust
 Chicago Sun-Times
 Chicago Tribune
 ComEd/Exelon Corporation
 The Irving Harris Foundation
 Hoy
 Hyatt Hotels Corporation
 Institute of Museum and Library
 Services, a federal agency
 National Society of Professional
 Engineers
 Polk Bros. Foundation
 United Service Companies
 USG Corporation
 A. Montgomery Ward Foundation

\$10,000 - \$19,999

Aon
 Baxter International Inc.
 Burke, Warren, MacKay &
 Serritella, P.C.
 CVS Caremark Charitable Trust
 Daily Herald
 Ernst & Young LLP

Harris Bank
JPMorgan Chase Foundation
KPMG LLP
MBIA Foundation Inc.
Morgan Stanley & Co.
National Science Foundation
The Northern Trust Company
Nyhan, Bambrick, Kinzie & Lowry, P.C.
Sidley Austin LLP
Siebert Brandford Shank & Co., LLC
UBS
Walgreen Co.
Winston & Strawn LLP
Wintrust Wealth Management

\$5,000 - \$9,999

Aetna
The Boeing Company
Charter One
DLA Piper US LLP
Goldman Sachs & Co.
GolinHarris
GTCR Golder Rauner II, LLC
Illinois Arts Council, a state agency
Illinois Tool Works Inc.
Kinder Morgan Foundation
Korn/Ferry International
Krueck + Sexton Architects
MB Financial Bank
Neal, Gerber & Eisenberg, LLP
New Prospect Foundation
PwC
The RISE Group, LLC
Robert W. Baird & Co.
Scott Balice Strategies, LLC
TTK Partners
Turner Construction Company
Vedder Price
Vienna Beef
Washington, Pittman & McKeever, LLC
William Blair & Co.
Wintrust Commercial Banking
Wrightwood Capital

\$1,000 - \$4,999

Anonymous
Ariel Investments
ASGK Public Strategies
City of Chicago, Department of Cultural Affairs, CityArts Program 4
Charles R. Feldstein & Co.
IBM Corporation
Donald P. & Byrd M. Kelly Foundation
Lincoln Financial Foundation

Luca Luca
Louis R. Lurie Foundation
Me & Ro
Metropolitan Pier & Exposition Authority
Mortenson Construction
Neal, Murdock & Leroy, LLC
Neiman Marcus
Perkins Coie
PNC Bank
RedBox Workshop
Walter and Caroline Sueske Charitable Trust
Van Cleef & Arpels, Inc.
Young & Rubicam

\$500 - \$999

Action for Children
Jim Beam Brands Co.
Latham & Watkins LLP
Mariani Landscape
MFS Investment Management

\$250 - \$499

Olenick Associates
The Martec Group
Wm. Wrigley Jr. Company Foundation

Corporate Connections

Abbott
Accenture
Allstate
American Airlines
Aon
Bank of America
Baxter International Inc.
Burke, Warren, MacKay & Serritella, P.C.
Case Construction Equipment, a brand of CNH, a Fiat Group Company
Casteel Coffee
Children's Memorial Hospital
ComEd/Exelon Corporation
Ernst & Young LLP
Goldman Sachs & Co.
Howrey LLP
Hyatt Hotels Corporation
IBM Corporation
Illinois Tool Works Inc.
JPMorgan Chase
KPMG LLP
Kraft Foods Inc.
MB Financial Bank
Microsoft Corporation

Neal, Gerber & Eisenberg, LLP
The Northern Trust Company
PwC
The PrivateBank and Trust Company
Sidley Austin LLP
Target Corporation
UBS
USG Corporation
Vedder Price
Walgreen Co.
William Blair & Co.
Winston & Strawn LLP
Wintrust Wealth Management

In-Memory Gifts

In memory of Prue Beidler's mother
Paula R. Kahn

In memory of George Conger
Meredith and Chad Freese

In memory of Richard Durker's mother
Ellen Soren

In memory of Richard S. Feddor, Sr.
Laura and Greg Freeman

In memory of Bonnie Fine
Ethel H. Feuerwerker

In memory of Yvonne and Roy Johnson
Anita Rivkin-Carothers

In memory of Matthew Neumeier
Sue Berman and Steve Libowsky
Kathryn and Suisheng Chang
Deborah and Clifford Eisenach
Mary and John Gorny
Patricia Howell
Lawrence Kaufman
Maeve Kelleher
Mary Ann Klumb
Wendy Fox Lawson
Randy Mehrberg
Charlene Huang Olson and Christopher Olson
Beth Perlman
Paula and Robert Pheiffer
Randi Ragins and Robert Markowski
Nydia and Michael Searle
Junia Shlaustas

In memory of Diane Wales
Carolyn Wales

In-Honor Gifts

In honor of Susan Abrams

Benita Levy

In honor of Prue and Frank

Beidler's son's wedding

Stephanie Lieber

In honor of Meredith Bluhm-Wolf

Betsy and Dale Pinkert

In honor of Amy Carmell, Ellen Carmell, Karen Harrison and Gigi Pritzker Pucker

Margot Stern Strom

In honor of Brendan Deely

Allen Jordan

George Stoe

In honor of Marilyn Eisenberg

Karen G. Harrison and

Walter G. Freedman

In honor of Jennifer Farrington

Jennifer and Michael Beirne

In honor of Susan and Kevin Flynn

Ann Tenbrunsel and Dante Domenella

In honor of Walter Freedman

The Cloverleaf Group Inc.

In honor of Justin Friesen

Ellen and James Stirling

In honor of Betsey Grais

Miriam and Benjamin Lichstein

In honor of Adam Hecktman

Suzan and William Pinsoff

In honor of Susan Insoft

Lisa and Jeffrey Aronin

In honor of Paula Kahn

Janet and Thomas Murphy

In honor of Lauren Kreda

Gayle Arlen and Corey Zimmerman

In honor of Julie Latsko

Suzette and Alley Bulley

Shawn M. Donnelley and

Christopher M. Kelly

Maria Bechily Hodes and Scott Hodes

Eileen and Rob Stein

In honor of Stephanie Lieber

Jodi Kantor and Ron Lieber

In honor of Peggy Lim

Charlene Huang Olson and

Christopher Olson

In honor of Michael Masters

Marcia Rubens

In honor of Nadine Moore

Virginia and Joshua Hale

Stephen King

In honor of Charlene Huang Olson

Marcy and Gerald Spector

In honor of Fran Pelly

Anese and Bernard Klein

In honor of Stephanie Sinder,

Alyssa Unikel and Ronna Zoll

Susan and Terry Chapman

In honor of the Turula Family

Dena and Joshua Sweitzer

In honor of Mary and Joe Tyree

Linda Mueller and Brian Gupton

In honor of Jamie Zoll

Lindy Hirschsohn and Chris Coetzee

In honor of Jamie Zoll's Bat Mitvah

Ronna and Steven Zoll

Matching Gifts

Aetna

Google, Inc.

MBIA Foundation Inc.

MFS Investment Management

Microsoft

Neiman Marcus

The Northern Trust Company

Sara Lee

UBS

USG Corporation

Wm. Wrigley Jr. Company Foundation

In-Kind Donors

10 Pin Bowling Lounge

Adler Planetarium

Affinia Chicago Hotel

Diana Aixalá and Gavin Campbell

All About Dance

All Seasons Ice Rinks

Allstate Foundation

American Girl Place

Aon

Art Effect

Atwood Cafe

Bank of America

Bell's Brewery, Inc.

Blue Man Group

Bob Chinn's Crab House Restaurant

Brazzaz

Breathe Unique Floral Design

The Bristol

Broadway in Chicago

Buckingham I.D.

Deanna and Lino Burtoli

Cafe 28

Canyon Ranch

Casteel Coffee

Catering by Michael's

Sandy and Bob Chapman

Cheesecake Factory

Chicago Bears Youth Football Camps

Chicago Botanic Garden

Chicago Bulls

Chicago Cubs

Chicago Fire

Chicago History Museum

Chicago Indoor Racing, LLC

Chicago Shakespeare Theater

Chicago Wolves

Chicago Zoological Society/
Brookfield Zoo

China Kids

Classic Kids Photography

Classic Party Rentals

CNH America LLC

Coi

ComEd, an Exelon Company

Comedy Sportz Theatre

Costco

The Counter

Karen Curtin and Thomas Bond

CVS Caremark Charitable Trust

Cynthia Rowley

da Vinci Group

Dana Hotel and Spa
The Denim Lounge
DLA Piper US LLP
E. Leaven Food Company
East Bank Club
Ebella
Eli's Chicago's Finest, Inc.
Ernst & Young LLP
Everybody's Nuts! Pistachios
Exclusive Resorts
Exelon Corporation
Fantasy Kingdom
The Field Museum
Fitness Formula Clubs
Flora Confections
Four Seasons Resort Scottsdale
Frank Lloyd Wright Preservation Trust
Kim and Justin W. Friesen
Frontera Grill
Rick Garmon
Margaret and Frank Ginn
Goodman Theatre
Harris Bank
Harris Theater for Music and Dance
Karen G. Harrison and
Walter G. Freedman
Carey and Adam Heckman
Henson Consulting
Lindy Hirschsohn and Chris Coetzee
Hoerr Schaudt Landscape Architects
Dana Hokin and Robert Garvey
Hub 51
Hubbard Street Dance Chicago
Hyatt Hotels Corporation
Il Borro Estate
Illinois Sports Facilities Authority
J. Gordon Designs
Jennie and Vera's Cookies
John G. Shedd Aquarium
Jump Ahead Academy, LLC
Kiehl's
KPMG LLP
L2O
La Casa De Isaac
La Madia - A Contemporary Pizzeria
Laudi Vidni
Lettuce Entertain You Enterprises
Lou Malnati's Pizzeria
Gail J. and Robert B. Loveman
Cheryl Watson-Lowry and
William A. Lowry
Luca Luca

Luna Negra Dance Theater
Luxury Chicago Limo
Madison and Friends
MANA Food Bar
Barbara Goodman Manilow
Marriott Theatre in Lincolnshire
Matt Breen Personal Training, LLC
Meredith Marks Accessories
Michael Anthony Salon Spa
Midway Games
mk The Restaurant
Maydene and Christopher Moore
The Morton Arboretum
Moto Restaurant
Muntu Dance Theatre of Chicago
Museum of Science & Industry
Musical Magic
My Gym Children's Fitness Center,
Chicago
Natalino's Italian Restaurant
Neiman Marcus
Nickelodeon
Nicole Miller
Cathi Bruni Norris
The Northern Trust Company
Novelty Golf & Games
Oceanique
Odd Lot Entertainment
Odyssey Fun World
Ojai Valley Inn & Spa
Charlene Huang Olson and
Christopher Olson
Park 52 Restaurant
Paul Rehder Salon
Peak Performance Training, Inc.
Phil Stefani Signature Restaurants
Pinstripes
The Poison Cup
Pompei
The Pritzker and Pucker Families
Province
PRP Wine International
Radio Flyer, Inc.
Ravenswood Event Center
Ravinia Festival Association
Ricoh Business Systems
Robot City Workshop
Ronsley, Inc
Rosebud Restaurants
Salon Buzz
Jacob R. Sandusky
The Second City

Sepia Restaurant
Sittercity.com
Six Flags
Art Smith and Jesus Salgueiro
Chelsea and James J. Smith
Sofitel New York
Spare Time
Sparkles Entertainment
Stanley's Kitchen and Tap
Emily Heisley Stoeckel and
Kevin Stoeckel
Stuart-Rodgers Photography
Studio 110 Salon
Sunda
Sweet & Sassy
Sweet Cassava Culinary Creations, LLC
Swirlz Cupcakes
Syd Jerome Menswear
Tabula Tua
Tavern at the Park
TheBestDressedList.com
Theory Sport.Dine.Lounge
Thomas Masters Gallery
Tru
Trump International Hotel &
Tower Chicago
Urban Oasis
Vail Snowsports School
Van Cleef & Arpels, Inc.
Vienna Beef
Wente Vineyards
Westin Chicago North Shore Hotel
Whirly Ball
Whole Foods Market
Windy City Fieldhouse
The Wit Hotel
Yoga Now
Ronna and Steven Zoll

Partners

A New Beginning Start Now
A World of Difference Institute—
Anti-Defamation League
ABJ Community Services
Abraham Lincoln Centre
Active Transportation Alliance
Addressing Asthma Englewood
Adelante Child Development Center
Adler Planetarium
Advocate IL Masonic Medical Center
Advocates for Community Wellness
Aedeok Lee Korean Dance
Afro-American Genealogical and
Historical Society of Chicago
African Drums Inc.
AfriCaribe Cultural Center
Aga Khan Foundation USA, Midwest
Agustus H. Burley School
Albany Park Community Center
All Our Kids Network
All Stars Project, Inc
Alliance for Community Peace
Alliance of Midwest India Association
Aloha Entertainment
ALYO Children's Dance Theatre
American Academy of Pediatrics
American Cancer Society
American Family History Institute
American Indian Center
American Lung Association
American Red Cross
Anawim Center
Angelic Organics Learning Center
Anti-Cruelty Society
Apostolic Church of God
Apple Dental Care
Arab American Family Services
Archi-Treasures
Ariel Academy
Art + Soul
The Art Institute of Chicago
Art Studio of Schaumburg
Arun's
Arya Bhavan
Asians4 Chicago
Asian American Arts & Culture
Foundation
Asian American Law Enforcement
Association
Asian Social Network
Association House
Austin Child Care Provider's Network
Austin Town Hall
The Autism Program of Illinois
Autism Speaks
Back of the Yards Community
Health Center
Bailey's Bees
Ballet Folklorico Nacional de
Victor Soria
Banneker Elementary School
Beatrice Caffrey Youth Services
Belle Center of Chicago
Beloved Community Family Services
Best Buddies
Bethel Lutheran Church
Bethel New Life—Project Triumph
Better Boys Foundation
Bickerdike Redevelopment Corporation
Big River, Inc.
Black Roots, Inc.
The Black Star Project
Blissfolds Yoga
Block Club Federation
Boundless Readers
Boys and Girls Club of Chicago
Brand New Beginnings
Breakthrough Urban Ministries
Bridge to Hope
Brookfield Zoo
Brown Sugar A Capella
BUILD, Inc.—Broader Urban
Involvement and Leadership
Development
Building Blocks Learning Academy
Bulletin Newspaper
Burmese Buddhist Association
Cabrini Green Tutoring Program, Inc.
Calco Urban Care
Calvary Baptist Church
Cambodian Association of Illinois
Cameron Elementary School
CARIE-Chicago Area Reggio
Inspired Educators
Carole Robertson Center
Casa Aztlan
Casa Central
Casa Misericordia Church
Catholic Charities of the Archdiocese
of Chicago
CeaseFire
Centers for New Horizons
Centro Infantil Consuelo Lee Corretjer
Centro Romero
CEP Youth Leadership
Cesar E. Chavez MAC
Chicago Aldermanic Wards
Chicago Arts Partnerships in Education
Chicago Botanic Garden
Chicago Branch of the Association for
the Study of African American Life
and History
Chicago Build the Peace Committee
Chicago Cares
Chicago Center for Cultural
Connections
Chicago Children's Choir
Chicago Children's Diabetes Program
Chicago Commission on Human
Relations
Chicago Commons
Chicago Cultural Alliance
Chicago Dance Crash
Chicago Danztheatre Ensemble
Chicago Defender
Chicago Department of Family and
Support Services
Chicago Fire Department
Chicago Foundation for Education
Chicago Gaelic Park
Chicago History Museum
Chicago Hopes
Chicago Housing Authority
Chicago Human Service Department
Chicago Legal Advocacy for
Incarcerated Mothers
Chicago Metro AEYC
Chicago Park District
Chicago Persian School
Chicago Project for Violence Prevention
Chicago Public Library
Chicago Public Schools
Chicago Public Schools Office of
Language and Cultural Education
Chicago Shakespeare Theater
Chicago Sounds Project
Chicago Southside Autism
Support Group
Chicago Symphony Orchestra
Chicago Teacher Center
Chicago Urban League
Chicago West Side Christian School
Chicago Youth Centers
Chicago's 1st Black Inventing and
Entrepreneur Organization
Chicagoland Bicycle Federation

Child and Family Connections
 Childcare Network of Evanston
 ChildServ
 Children Center of Cicero & Berwyn
 The Children's Center of Morton
 East High School
 Children's Home & Aid
 Children's Memorial Hospital
 ChinaKids
 Chinatown Chamber of Commerce
 Chinese American Civic Council
 Chinese American Museum of Chicago
 Chinese American Service League
 Chinese Cultural and Educational
 Association
 Chinggis Khan Mongolian School
 Chiro One Wellness Center
 Christ Center of Truth
 Christian Fellowship Refugee Ministries
 Christopher House
 Church of God Day Care Center
 Circa
 Citizens Utility Board
 City Colleges of Chicago
 City Farm Chicago
 City of Chicago City Clerk's Office
 City of Chicago Pipe Band
 City Outreach Foundation
 Civic Knowledge Project
 CLOCC—Consortium to Lower
 Obesity in Chicago Children
 Clyde Park of Cicero
 Coalition for a Better Chinese
 American Community
 COFI—Community Organizing and
 Family Issues
 Columbia College
 Community and Economic
 Development Association
 Community Counseling Centers
 of Chicago
 Confederation of Spanish
 American Families
 Connections for Abused Women
 and their Children
 Consulate Generals of Greece, India,
 Japan, Korea, Mexico, and Poland
 Convoy of Hope
 Cooking and Hospitality Institute
 of Chicago
 Coppin Memorial A.M.E. Church
 Corinthian Temple Church of God
 in Christ
 Covering Kids and Families Illinois
 CPS—Project Child Find
 DANK Haus German American
 Cultural Center
 Dee's Collectibles
 DESTINY Systems, Inc.
 Developing Communities Project, Inc.
 DePaul University
 Dr. Pedro Albizu Campos High School
 DSBDA—Division Street Business
 Development Association
 Easter Seals Metropolitan Chicago
 East Village Youth Program
 East-West University
 Eden Place Nature Center
 Educational Institute for Civil
 Rights and Services, Inc.
 Egbe Ife Ilu Ogbomosho of Chicago
 El Coquero
 El Hogar del Niño
 El Valor
 Englewood Community Cultural
 Planning Council
 Englewood Neighborhood
 Health Center
 Erie Family Dental Clinic
 Erie Neighborhood House
 Erikson Institute
 Evanston Escola de Samba
 Evanston/Skokie Valley Senior Services
 The Faith Community of St. Sabina
 Family Bridges Chicago
 Family Focus, Inc.
 Family Learning Resource Centers
 Family Matters
 Family Rescue
 The Field Museum
 Filipiniana Dance Group
 Firman Community Services
 First Start Learning Academy
 FOCUS Youth
 Francis W. Parker School
 Freedom Temple Church of God
 in Christ
 The Fulton Street Block Club
 Funkadesi
 Gads Hill Center
 Garfield Park Conservatory
 Gifts from God Ministry
 Girl Scouts
 Glenview Health Systems
 Global Explorers Kids
 Global Family Yoga
 Golden Apple Institute
 Goodwill Industries, YES
 Fatherhood Project
 Graffiti Zone
 Grand Boulevard Federation
 Grandfamilies Program of Chicago
 Great Lakes Irish Wolfhound
 Association
 Greater Chicago Food Depository
 Greater Institutional Ame Church
 Greater St. John Center of Hope/North
 Austin Homework Hang-out
 Greater Westside of Chicago Early
 Childhood Network
 Green Parents Network
 Green Street Project
 Green Sugar Press
 Green Youth Farm
 Growing Home, Inc.
 Growing Power
 Grupo Taino
 Habilitative Systems, Inc.
 Harvest America
 Hataw Pinoy
 Healthy Chicago Lawn
 Healthy Families Chicago
 Healthy Hermosa Coalition
 Heartland International
 Henry Booth House
 Hispanic Bible School
 Hispanic Heritage Month Committee
 Holy Angels School
 Home School of Excellence
 Howard Area Community Center
 Hubbard Street Dance Chicago
 Humboldt Park Social Service
 ICAN Outreach Community
 Organization
 Illinois Action for Children
 Illinois Coalition for Immigrant
 and Refugee Rights
 Illinois Department of Healthcare and
 Family Services
 Illinois Department of Human Services
 Illinois Fatherhood Initiative
 Illinois Malayalee Association
 Illinois Maternal & Child Health
 Coalition
 Illinois Network of Charter Schools
 Illinois Speech, Language &
 Hearing Association
 Illinois State Latino Artists Association
 Illinois Welcoming Center
 Imagine Art Studio

Imagine Englewood If...
 Imani Children's Academy
 Indo-American Center
 Indonesian Dance of Illinois
 In the Paint
 Indonesian American
 Community of Illinois
 Inner Voice
 Institute for Community Resource
 Development
 Instituto Cervantes of Chicago
 Intonation Music Workshop
 IPRAC—Institute of Puerto Rican
 Arts & Culture
 Irish American Heritage Center
 Irish Music School of Chicago
 Jack and Jill of America, Inc. Windy
 City Chapter
 Jane Addams Hull House Association
 Japanese American Service Committee
 JHP Community Center
 Jewish Child and Family Services
 Jewish Theatre Ensemble—Storyteller
 Project
 Jewish United Fund/Jewish Federation
 of Metropolitan Chicago
 Kalapriya Dance
 Kaleidoscope, Inc.
 Kids in Training of Chicago
 Kidz Korna Youth Organization
 KLEO Community Family Life Center
 Korean American Resource and
 Cultural Center
 Korean-American Association of
 Chicago
 Korean-American Sports Council
 of Chicago
 Korean-American Tourism Association
 Korean-American YWCA
 Korean School of Chicago
 La Casa Norte
 Lajkonik Dance
 Lao American Community Services
 LaRabida Children's Hospital
 Latino Organization of the Southwest
 Lawndale Amachi Mentoring Program
 Lawndale Christian Development
 Corporation
 Lekotek
 Lil 'ol Korean Dance
 Lily of the Valley Spiritual Church
 Lincoln Park Cooperative
 Nursery School
 Lincoln Park Zoo

Little City Foundation
 Little Village Environmental
 Justice Organization
 Local Initiatives Support Corporation
 Logan Square Neighborhood House
 Loyola University Chicago
 Loyola University Museum of Art
 Lutheran Day Nursery
 Lutheran Social Services of Illinois
 Mad Science of Chicago
 Madison Children's Museum
 Mae's Early Child Development Center
 Malaysian Club of Chicago
 Marcy-Newberry Association, Inc.
 Marillac Social Center
 Mary and Leigh Block Museum of Art
 Max Lulich
 McNulty School of Irish Dance
 Meier Clinics Foundation
 Metropolitan Family Services
 Mid-West Caribbean Association
 Mighty Acorns
 Miguel's Fine Art Photography
 Mitzi Freidham Englewood Child
 and Family Center
 Modal Music Inc.
 Mongolian Children's Performing
 Arts Festival
 Mt. Zion Anglican Church
 Mujeres Latinas en Acción
 Museum of Contemporary Art
 Museum of Science and Industry
 Muslim American Veterans Association
 National City
 National Hellenic Museum
 National-Louis University
 National Museum of Mexican Art
 Nature's Creatures
 Natya Dance Theatre
 Near North Health/Operation Frontline
 Near Northwest Civic Committee
 Near West Side Community
 Development Corporation
 Negro League Legends, Inc.
 NEIU-Chicago Teacher's Center
 Nepalese American Society
 New Chinese Media Inc.
 New Communities Project-Humboldt
 Park Task Force
 New Hope Community Baptist Church
 New Mt. Calvary Church
 New Spiritual Light Missionary
 Baptist Church

Niña Foundation
 North Lawndale Community News
 Northeast American Foster Parent
 Association
 Northeastern Illinois University
 Northwest Institute for Contemporary
 Learning
 Northwestern University
 Nuestro Tambo
 Oak Park River Forest Nursery
 ODEION School of Music
 Office of Congressman Danny K.
 Davis, Jr.
 Old Town School of Folk Music
 One Hope United
 Onli Studios
 Onward Neighborhood House
 Open Doors Organization
 Organic School Project
 Oriental Institute-University of Chicago
 Orpheus Hellenic Folklore Society
 Ounce of Prevention Fund
 Our Lady of Fatima
 Our World, One World
 Pamphylia Christian Church
 Passages Alternative Living Programs
 Pastors of Englewood
 Paternal Involvement Center
 P.E.A.C.E. Community Organization
 Collaborative
 The Peace School
 Peggy Notebaert Nature Museum
 Pembroke Farming Family
 Persian School of Chicago
 Pillars
 Pilsen Alliance
 Pilsen Inner City Kids
 Pilsen-Little Village Alliance
 Pilsen Wellness Center
 Pinoy Craft
 Polish Highlanders Alliance
 Progressive Community Center,
 The People's Church
 Project Brotherhood
 Project Exploration
 Promise Kitchen
 Proveedores en Acción para
 Nuestra Niños
 Puerto Rican Arts Alliance
 Puerto Rican Chamber of Commerce
 Pui Ying Art School
 Punjabi Cultural Society
 Quinn Chapel AME Church

Real Men Charities, Inc.
 Red Cross
 Rehabilitation Institute of Chicago
 Renacer Westside Community Network, Inc.
 Resurrection Health Care
 The Right Source
 Rogers Park Community Council
 Roseland Christian Ministries
 Runaway Buckers Cowboy and Cowgirl Camp
 Rush Medical College
 Safe Routes Ambassadors
 Sahaja Meditation
 Saint Joseph Resurrection Hospital
 Salvation Army
 Samahang Kapatid
 Sankofa Safe Child Initiative
 School of Rock
 The School of the Art Institute of Chicago
 Second Chance Employment and Empowerment Project
 Segundo Ruiz Belvis Cultural Center
 Self Reliance Foundation
 SGA Youth and Family Services
 Shamrock Imports
 Shedd Aquarium
 Sherwood Peace Association
 Sikh American Heritage Organization
 Sinai Community Institute
 Sing Tao Newspapers
 SOS Children's Villages Illinois—Chicago Village
 South Central Community Services
 Southwest Asian Outreach
 Spertus Museum
 Spirit Wing Dance Ensemble
 Spiritual Awakening MB Church
 Spoken Word Academy of Chicago
 Stay Environmentally Focusd' Foundation
 St. Pius V/Casa Juan Diego Organization
 Strengthening Families Illinois
 Swedish American Museum Center
 Target Area Development Corp.
 Teach for America
 Teamwork Englewood
 Title IX Office of Indian Education
 Tolton Literacy Center
 Uhlich Children's Advantage Network
 UNAN Imports

Union League Boys and Girls Club
 United Way of Metropolitan Chicago
 Unity Fellowship Baptist Church
 University of Chicago
 Univision
 Uptown Multicultural Arts Center
 Urban Native of Chicago
 US Environmental Protection Agency
 Variety—The Children's Charity
 Vietnamese Association of Illinois
 Vittum Park
 Voice of the People Uptown
 Voices of Change
 Volta Academy
 Washburne Culinary Institute
 Washington Park Conservancy
 Washington Park Consortium
 Washington Park New Communities Program
 Wayman AME Church
 West Englewood Census Committee
 West Englewood United Organization Service Connector
 West Humboldt Park Center for Performing Arts
 West Humboldt Park Development Council
 West Side Minister's Coalition
 West Town Leadership United
 Windy City Harvest
 Woodlawn Early Childhood Development Center
 The Woodlawn Organization
 World Relief
 Yellie's Place, Inc.
 YMCA
 Young Irish Fellowship Club of Chicago
 Youth Service Project
 YWCA

Volunteers

100+ hours

Shirley Barker
 Fabiana Bernardino
 Louise Freidland
 Michael Griffin
 Molly Hoisington
 Nancy Koshmider
 Aimee Lang
 Matt Porubcansky
 Lillie Rhoden
 David Romero
 Laura Ruhe
 Sheillah Vulcain
 Kenneth Wolf

50+ hours

Debbie Anderson-Phillips
 Vanessa Bernal
 Alissa Bernardi
 Ann Brown
 Ginny Bruno
 Candice Burke
 Kennisha Chavers
 Kristen Clifford
 Kathy Gaj
 Susan Kadin
 Jingran Liu
 Veronica Mercado
 Katherine Mineck
 Halle Neeley
 Elizabeth Nolan
 Amy Olchowski
 Bruce Paul
 Emily Pick
 Larry Serota
 Marjorie Shields
 Michael Shiff
 Bianca Smith
 Suzetta Whitaker

*Some photos provided by
 Eileen Ryan Photography ©2010*

Leadership

Board of Directors

Gigi Pritzker Pucker, *Chair*
Robert F. Barnett, *Chair Elect*
William A. Lowry, *Secretary*
Rex L. Sessions, *Secretary*
Laura Dunne, *Treasurer*
Kevin Flynn, *Treasurer*

Prudence R. Beidler
Jodi Block
Ananth Bhogaraju
Carole Brown
Blakely Bundy
Bruce R. Cohen
Brendan Deely
Marilyn Eisenberg
Nuria Fernandez
Justin W. Friesen

Frank H. Ginn
Michael A. Gordon
Jacqueline Griesdorn
Darrel Hackett
Karen G. Harrison
Adam J. Hecktman
Lindy Hirschsohn
Paula R. Kahn
Jeff King
Julie Latsko
Mary Liz Lehman
Peggy M. Lim
Todd Lippman
Barbara Goodman Manilow
Christian McGrath
Robert Mendonsa
Maydene Moore
Nadine E. Moore

Suzanne Muchin
Charlene Huang Olson
Jeffery S. Perry
Teresa Poggenpohl
E. Robbie Robinson
Camille Rudge
Gary Rudnick
Scott Schutte
Eric Sedler
James J. Smith
Steve Solomon
Mary Tyree
Lisa Walker
Robb Webb
Brenda Wolf
Thomas Zidar
Ronna Zoll

Auxiliary Board

Kathy Monahan, *Co-President*
Stephanie Thompson, *Co-President*
Kelly Turula, *Co-President*

Diana Aixalá
Galia Felemovicius
Pam Gordon
Susan Insoft
Susan Kim
Elizabeth Liebovitz
Cindy Mufarreh
Mary Newburn
Georgy Ann Peluchiwski
Benedict Rocchio
Gail Rodman
Rebecca Ryan
Stephanie Sinder
Sheila Tadavarthy
Alyssa Unikel

Board of Advisors

Suzanne Muchin, *Chair*
Sharon Bloyd-Peshkin
Dianne Sautter Campbell
Angela Smith Cobb
Amina Dickerson
Phyllis Glink, M.P.P.
Jacqueline Griesdorn
Reginald Jones
Dr. Sokoni T. Karanja
Cecile Keith-Brown
Jim Lasko
Elliot Lehman
Matt Longjohn, M.D., M. P. H.
Samuel J. Meisels, Ed.D.
Chuck Meyers
Tracy Moran
Tony Raden
Gwendolyn Rogers
Maria Whelan

Metropolitan Board

Larry Serota, *Chair*
Michael Masters
Jonathan Mirkin
Jason Pritzker
Michael Shiff
Kurt Summers
Alex Zamiar

Be a Kid Again Gala: Come Out and Play! Co-Chairs

Julie Latsko
William A. Lowry
Mary Tyree

Winter Wonderland Co-Chairs

Galia Felemovicius
Pam Gordon

Spring Family Formal Co-Chairs

Elizabeth Liebovitz
Alyssa Unikel

Your Turn to Play

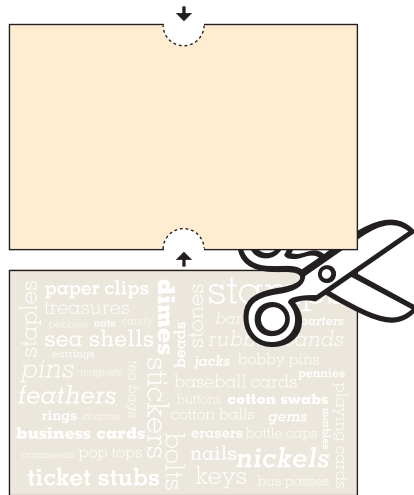
Turn the back cover of this Annual Report into your very own treasure box!
This activity is based on one of our most popular family programs.

Step 1

Remove back cover of Annual Report.

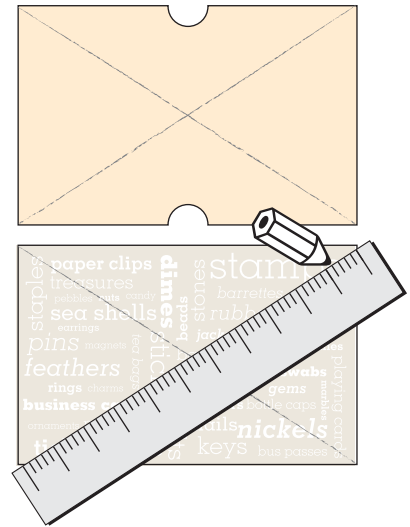
Step 2

Cut apart two rectangles.
Cut out two semi-circles as shown.



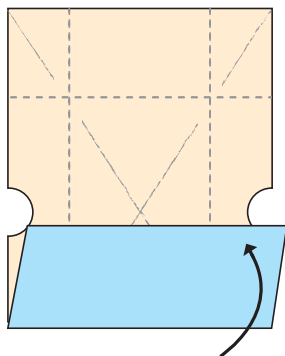
Step 3

Find the center.

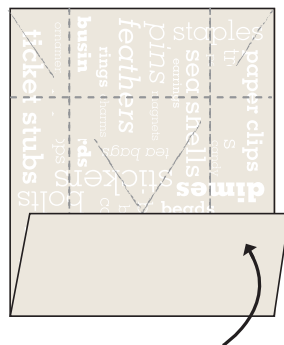


Step 4

Fold all sides to within 1/4" from the center.

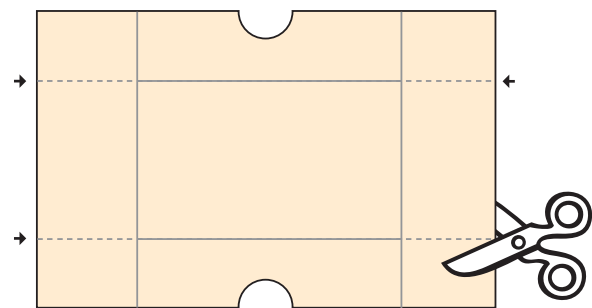


Fold all sides exactly to the center.



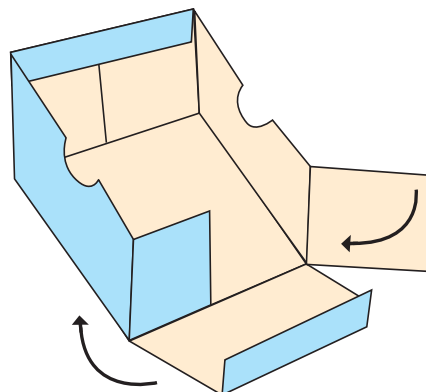
Step 5

Make four cuts in **each** rectangle along the dotted lines only.



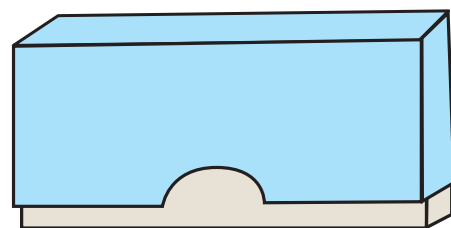
Step 6

Fold each half into the shape of box and secure ends with tape or glue.



Step 7

Enjoy using your box to give small gifts or to keep small treasures of your own!





staples
 paper clips
 treasures
 pebbles nuts candy
 sea shells
 earrings magnets
 pins
 feathers
 rings charms
 business cards
 ornaments pop tops
 ticket stubs
 dimes
 beads
 sticks
 bolts
 stones
 jacks
 bobby pins
 pennies
 cotton swabs
 gems
 erasers
 bottle caps
 nails
 keys
 stamps
 barrettes quarters
 rubber bands
 baseball cards
 buttons
 cotton balls
 marbles
 plaything
 cotton
 bus passes
 nickels



Chicago Children's Museum
700 East Grand Avenue, Suite 127
Chicago, Illinois 60611
www.ChicagoChildrensMuseum.org